

a place of mind

THE UNIVERSITY OF BRITISH COLUMBIA

GRADUATE AND  
POSTDOCTORAL STUDIES

# NAVIGATING UBC'S FUNDING LANDSCAPE

## **Brendan Morey**

Director, Graduate Awards and Funding  
Graduate and Postdoctoral Studies

## **Paul Poole**

Enrolment Services Professional, Grad Support Team  
Enrolment Services

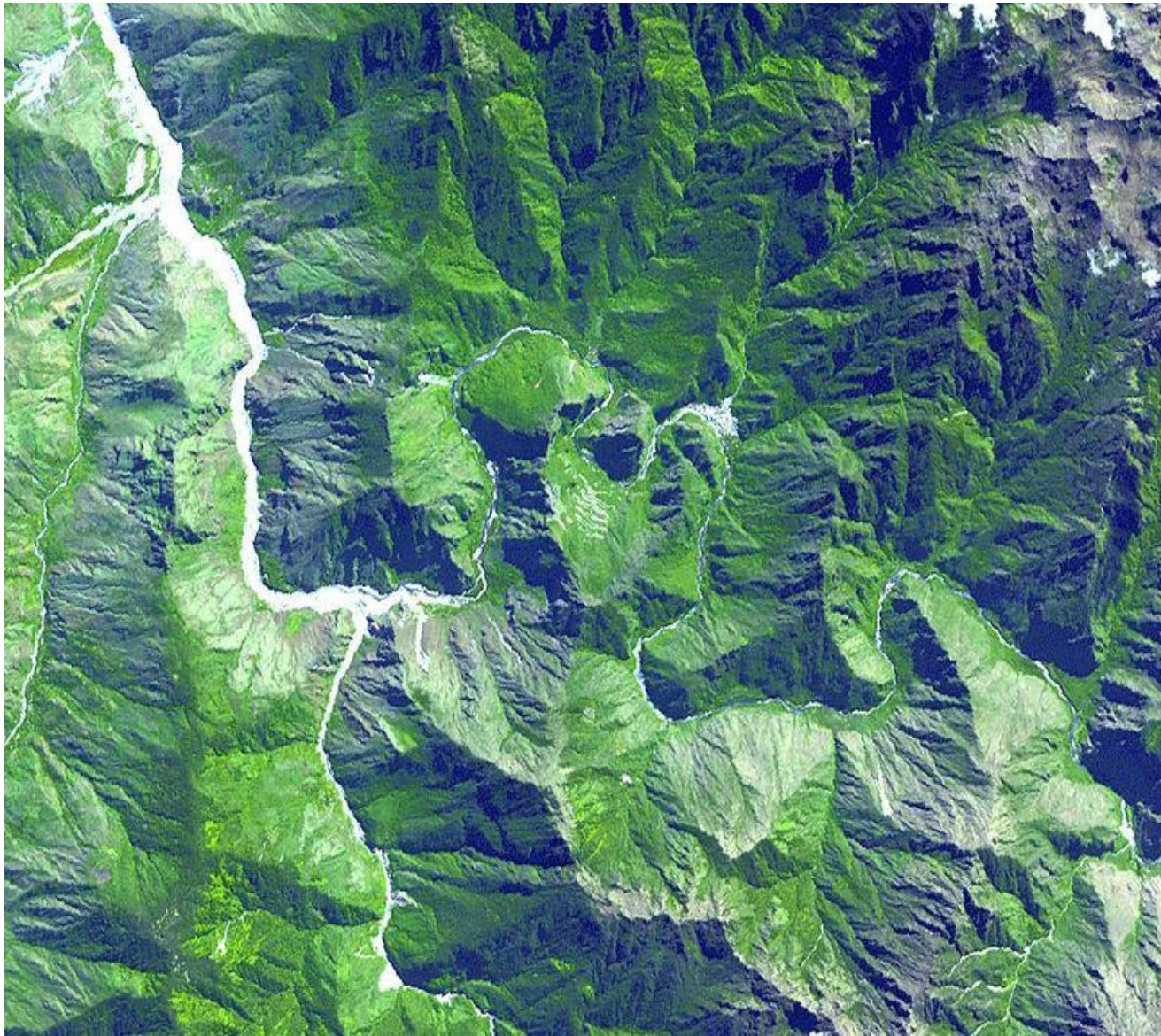


a place of mind

THE UNIVERSITY OF BRITISH COLUMBIA

GRADUATE AND  
POSTDOCTORAL STUDIES





Forest of  
Fees

River of  
Scholarships

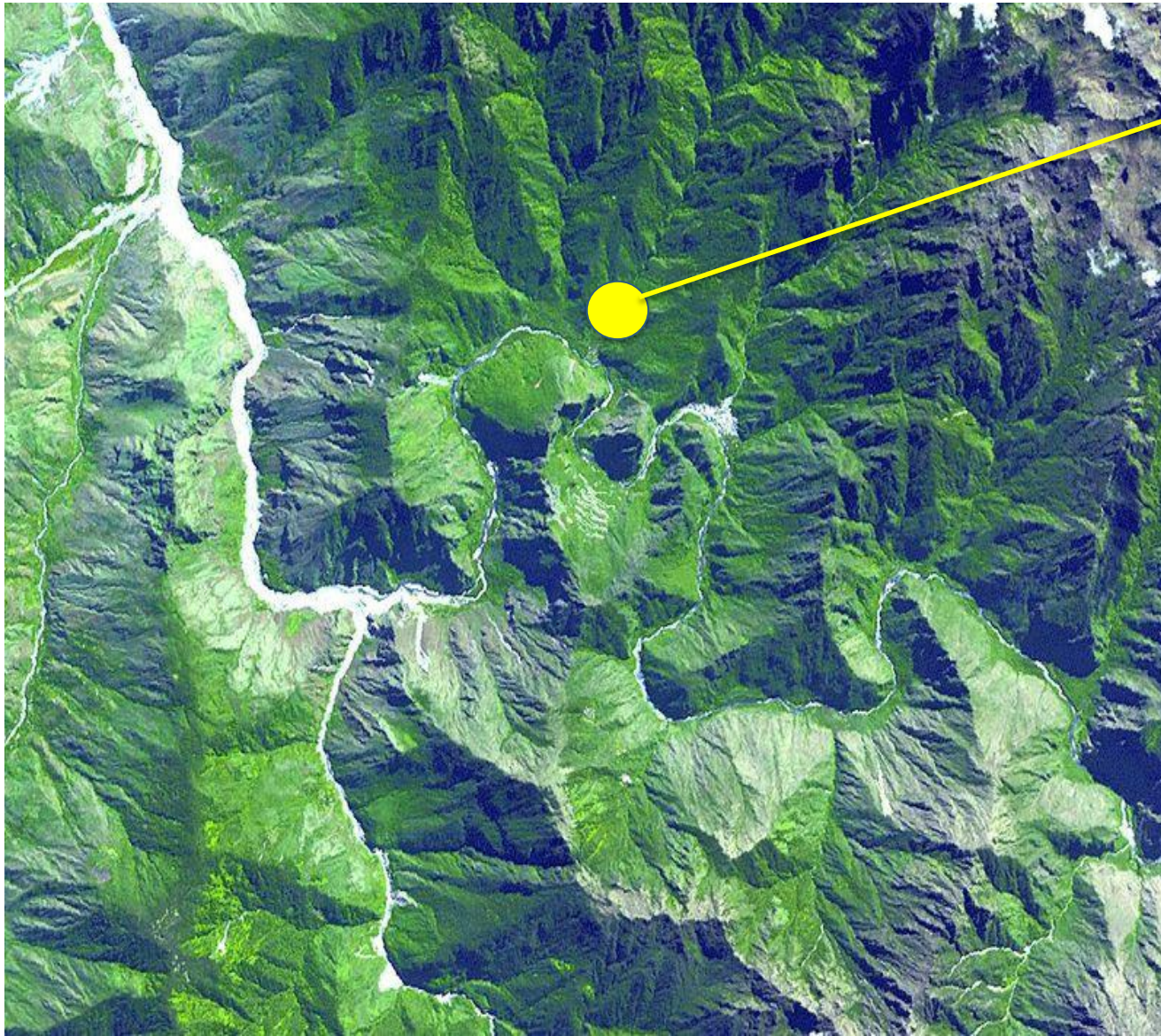
Valley of  
Resources

Mountain of  
Work

Maps and  
Compasses







Forest of  
Fees

River of  
Scholarships

Valley of  
Resources

Mountain of  
Work

Maps and  
Compasses





# Forest of Fees

## Tuition (most research-based grad programs)

- \$4,615 per year for domestic students
- \$8,108 per year for int'l students, offset by \$3,200 International Tuition Award
- Higher fees for some graduate programs

## Student fees

- Approximately \$1,100 per year
- Includes GSS/AMS Extended Health Insurance and UPass





# Forest of Fees

## Cost of living

- single student, shared accommodation, no car
- rent and utilities, food, phone, entertainment, clothes, etc.
  - **\$1,245 per month**
  - **\$14,944 per year**
- <https://www.grad.ubc.ca/prospective-students/tuition-fees-cost-living/cost-living>

Additional costs for moving, damage deposit, etc.





# Forest of Fees

Adding it all up (bare minimum)

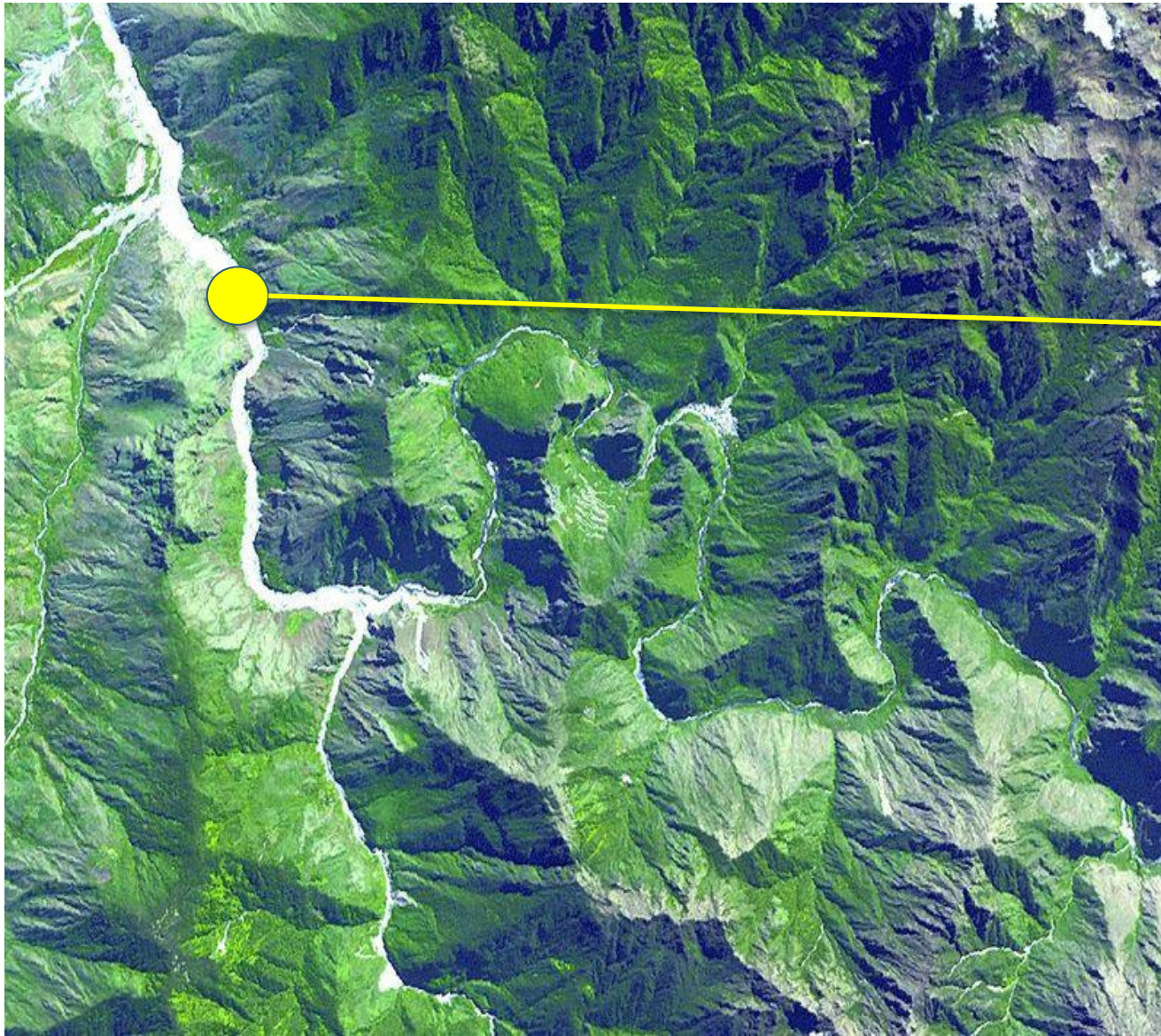
Expense	Annual Amount
Tuition	\$4,615
Fees	\$1,100
Cost of living	\$14,944
<b>Total</b>	<b>\$20,659</b>

## Future increases

- 2% tuition increase
- 2-3% cost of living increase







Forest of Fees

River of  
Scholarships

Valley of  
Resources

Mountain of  
Work

Maps and  
Compasses







# River of Scholarships

## By student application

- Majority of scholarships

## By graduate program recommendation

- Four Year Doctoral Fellowship
- Graduate Support Initiative Awards

## By automatic assignment

- International Tuition Award





# River of Scholarships

## Applying for scholarships

- Where to find information
- Where to submit application
  - To graduate program
  - To Faculty of Graduate and Postdoctoral Studies
  - To funding agency
- When
  - Which deadline applies to you?
  - Start early







# River of Scholarships

Eligibility criteria vs. selection criteria

Application components

- Application form
- Canadian Common CV
- Research proposal
- Transcripts
- Reference letters





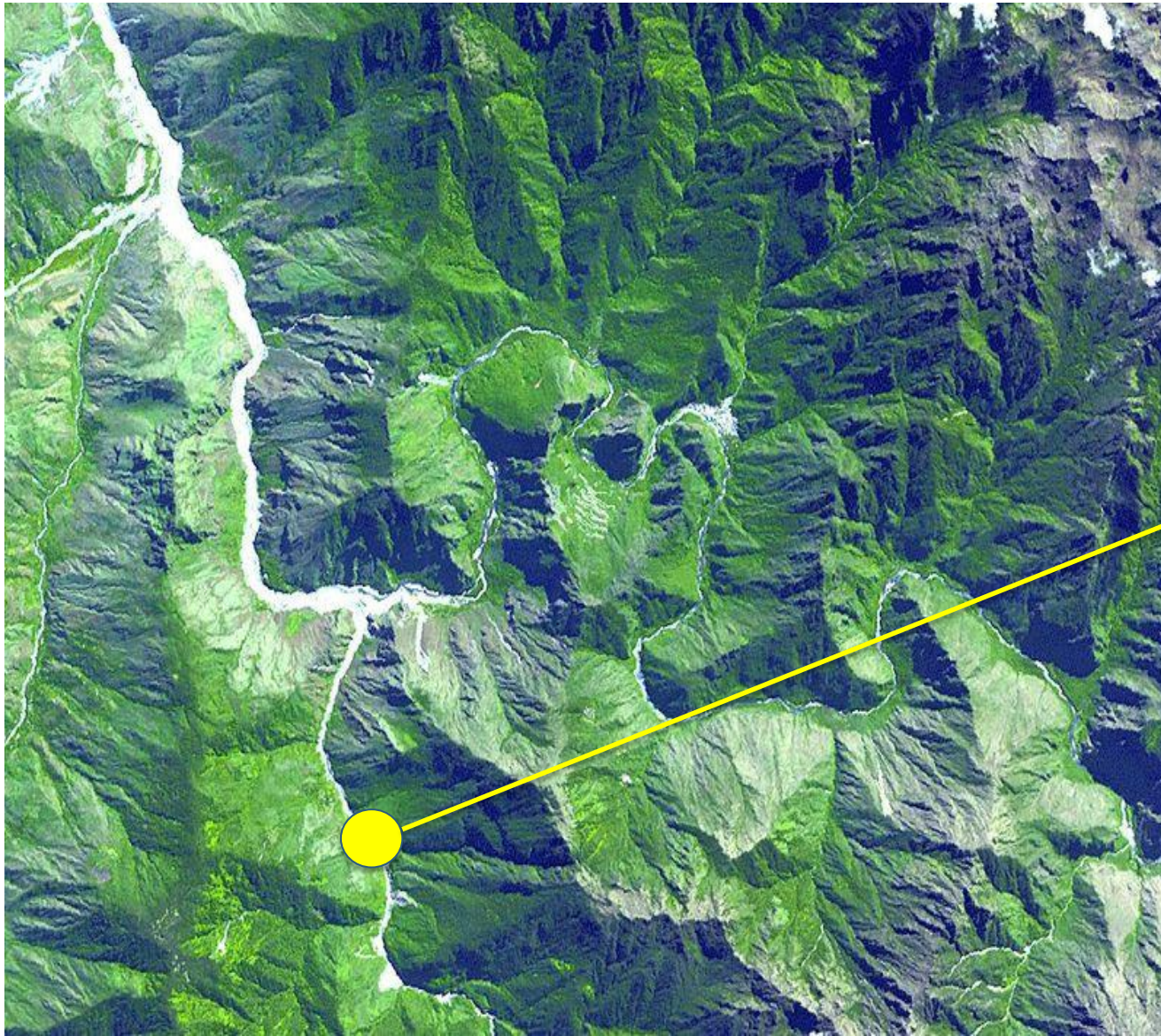
# River of Scholarships

Funding opportunities and resources:

- [www.grad.ubc.ca/awards](http://www.grad.ubc.ca/awards)
- <http://students.ubc.ca/enrolment/finances/awards/current> (many are for undergraduate students only, but some are open to graduate students)
- <https://yconic.com/>
- <http://www.scholarshipscanada.com/>







Forest of  
Fees

River of  
Scholarships

**Valley of  
Resources**

Mountain of  
Work

Maps and  
Compasses





# Valley of Resources

## Student loans

- Available to domestic and US students
- Apply through home province or country
- <http://www.students.ubc.ca/finance/student-loans/>
- Maximum per year (BC student loan)
  - \$16,640 for single student
  - \$24,960 for student with dependents







# Valley of Resources

## UBC General Bursaries

- Non-repayable, based on financial need
- Must be in receipt of government student loan
- Apply on-line via Student Service Centre by June 1st for Summer session and September 15th for Winter session bursaries
- Not all programs are eligible for bursary support
- Not available for international students





# Valley of Resources

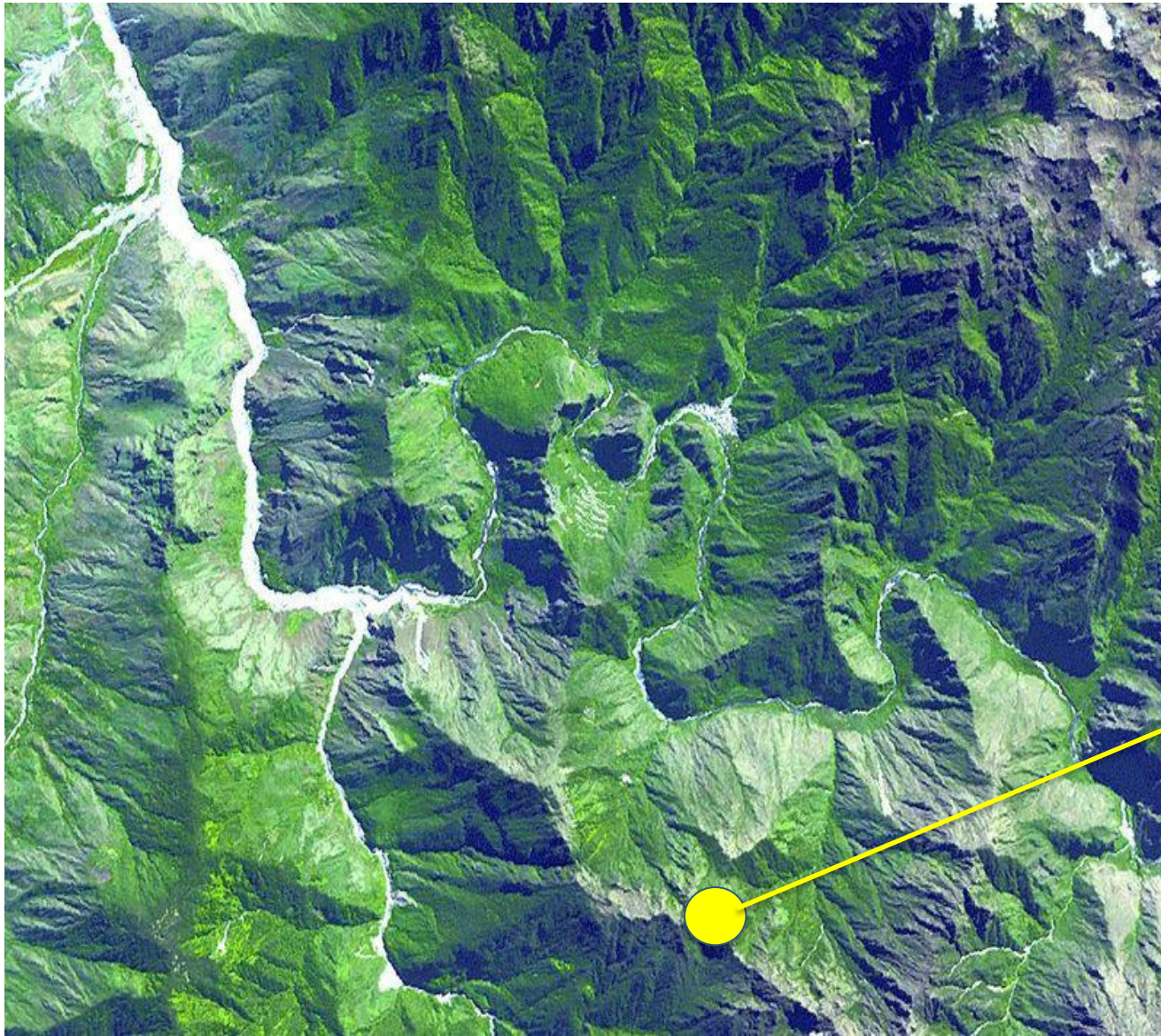
## Student lines of credit

- Available through your own bank

## Emergency funding

- Schedule a confidential advising appointment with Enrolment Services advisor
- May be able to assist with emergencies such as:
  - an unexpected change in living situation
  - illness or death in the family
  - an exceptional medical situation
  - other unforeseen circumstances you could not have planned for





Forest of Fees

River of Scholarships

Valley of Resources

**Mountain of Work**

Maps and Compasses







# Mountain of Work

## Teaching Assistantships

- Contact graduate program
- Collective agreement with CUPE 2278

## Research Assistantships

- Supported by supervisor's research grant
- Duties might constitute part of the student's graduate degree requirements
- Contact graduate program / supervisor





# Mountain of Work

## Work Learn Program

- On-campus work opportunities
- Open to international and domestic students
- Apply online at [www.students.ubc.ca/careers](http://www.students.ubc.ca/careers)

## Other employment

- Links to many opportunities at [www.students.ubc.ca/careers](http://www.students.ubc.ca/careers)





# Mountain of Work

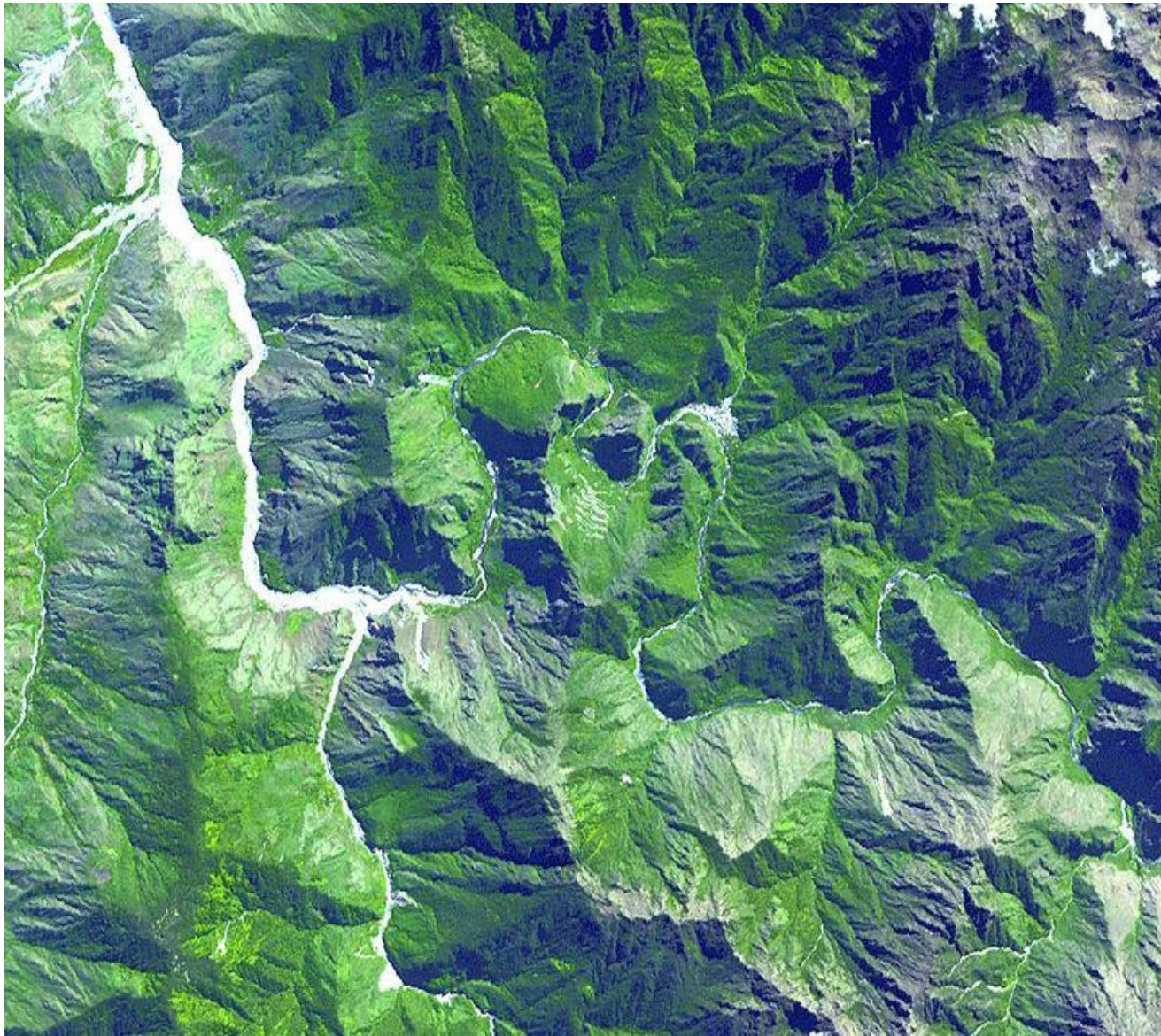
## Social Insurance Number

- Required in order to work in Canada
- Information for international students at:  
<http://students.ubc.ca/enrolment/finances/financial-advice/taxes-international/sin>

Recipients of large (\$17,500 per year or greater) scholarships limited to 12 hours per week of employment







Forest of  
Fees

River of  
Scholarships

Valley of  
Resources

Mountain of  
Work

Maps and  
Compasses





# Maps and Compasses

## Student Service Centre

- <https://ssc.adm.ubc.ca>
- Reviewing and paying tuition and fees
- Payment of all scholarships administered by G+PS
  - Award funding first applied to any outstanding fees
  - Remaining funds paid by direct deposit
  - If not enrolled in SSC direct deposit, remaining funds are issued as a cheque





# Maps and Compasses

## UBC Payroll

- [www.my.ubc.ca](http://www.my.ubc.ca)
- Payment of TA, RA and other employment income
- Paid 15<sup>th</sup> and end of each month
- Direct deposit to personal bank account







# Maps and Compasses

## Budgeting and other resources

- <http://www.students.ubc.ca/finance/how-can-we-help-you/financial-toolkit/>
- <http://www.fcac-acfc.gc.ca/Eng/forConsumers/lifeEvents/payingPostSecEd/Pages/StudentB-Grillepo.aspx>





# Maps and Compasses

## Key offices on campus

Office	Responsibility
Grad and Postdoc Studies <a href="mailto:graduate.awards@ubc.ca">graduate.awards@ubc.ca</a>	<ul style="list-style-type: none"><li>Scholarships</li></ul>
Enrolment Services (Brock Hall) <a href="mailto:es.gradsupport@ubc.ca">es.gradsupport@ubc.ca</a>	<ul style="list-style-type: none"><li>Advising on need-based funding</li><li>Tuition and fees</li><li>Scholarship cheque pick-up</li></ul>
Graduate program	<ul style="list-style-type: none"><li>TA and RA</li><li>4YF and GSI Award decisions</li></ul>
Career Services (Brock Hall)	<ul style="list-style-type: none"><li>Work Learn program</li><li>Other employment opportunities</li></ul>
UBC Financial Services (Payroll)	<ul style="list-style-type: none"><li>Payment of employment income</li></ul>



Map credit: NASA map from <http://www.dailygalaxy.com/.a/6a00d8341bf7f753ef014e8c528b0d970d-pi>  
(28 August 2013)



**a place of mind**

THE UNIVERSITY OF BRITISH COLUMBIA

**Graduate and Postdoctoral Studies**

[www.grad.ubc.ca](http://www.grad.ubc.ca)



a place of mind

THE UNIVERSITY OF BRITISH COLUMBIA

GRADUATE AND  
POSTDOCTORAL STUDIES