

a place of mind

THE UNIVERSITY OF BRITISH COLUMBIA

GRADUATE AND
POSTDOCTORAL STUDIES

NAVIGATING UBC'S FUNDING LANDSCAPE

Brendan Morey

Director, Graduate Awards and Funding
Graduate and Postdoctoral Studies

Cara Low

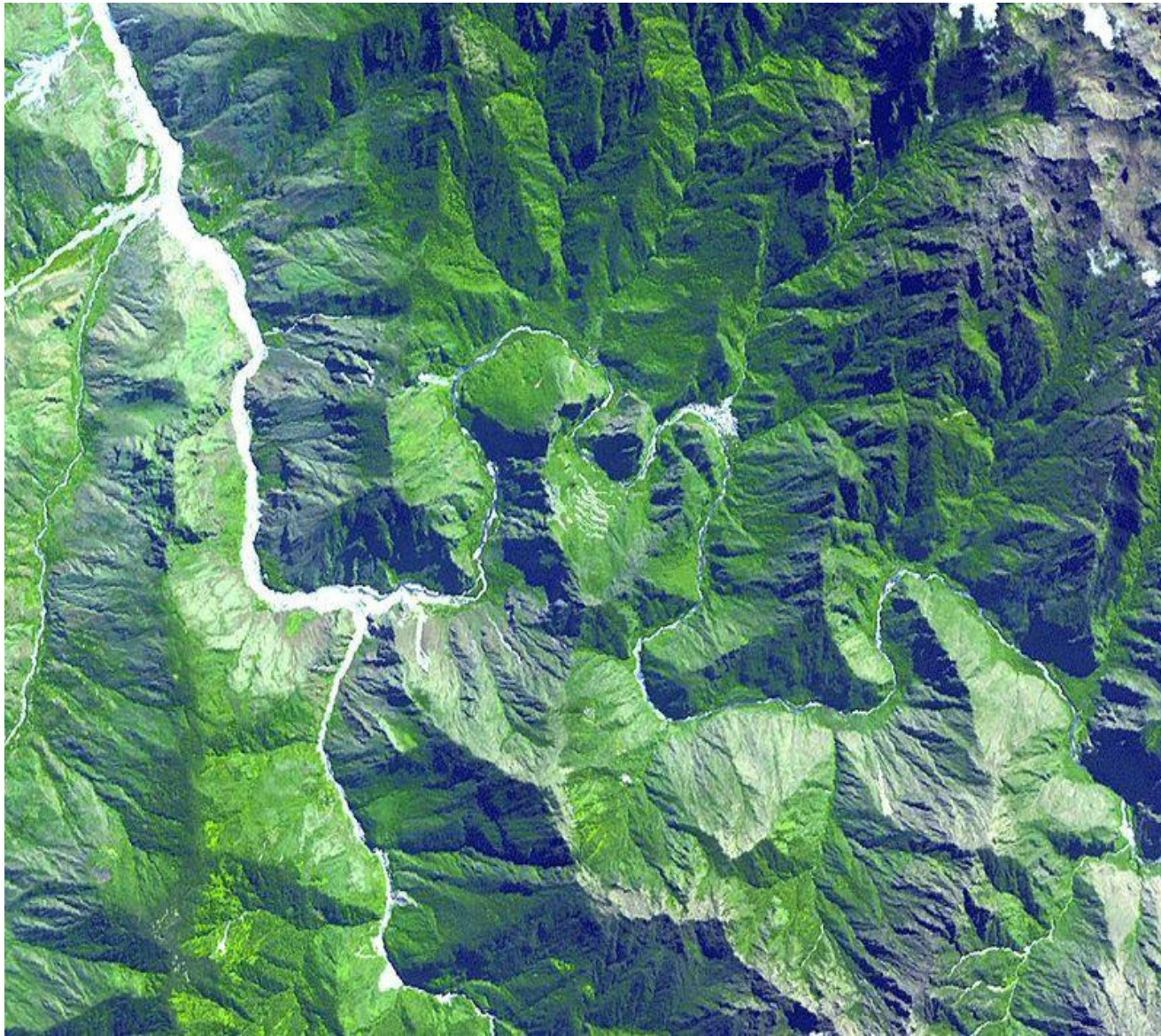
Enrolment Services Professional, Grad Support Team
Enrolment Services



a place of mind

THE UNIVERSITY OF BRITISH COLUMBIA

GRADUATE AND
POSTDOCTORAL STUDIES



Forest of
Fees

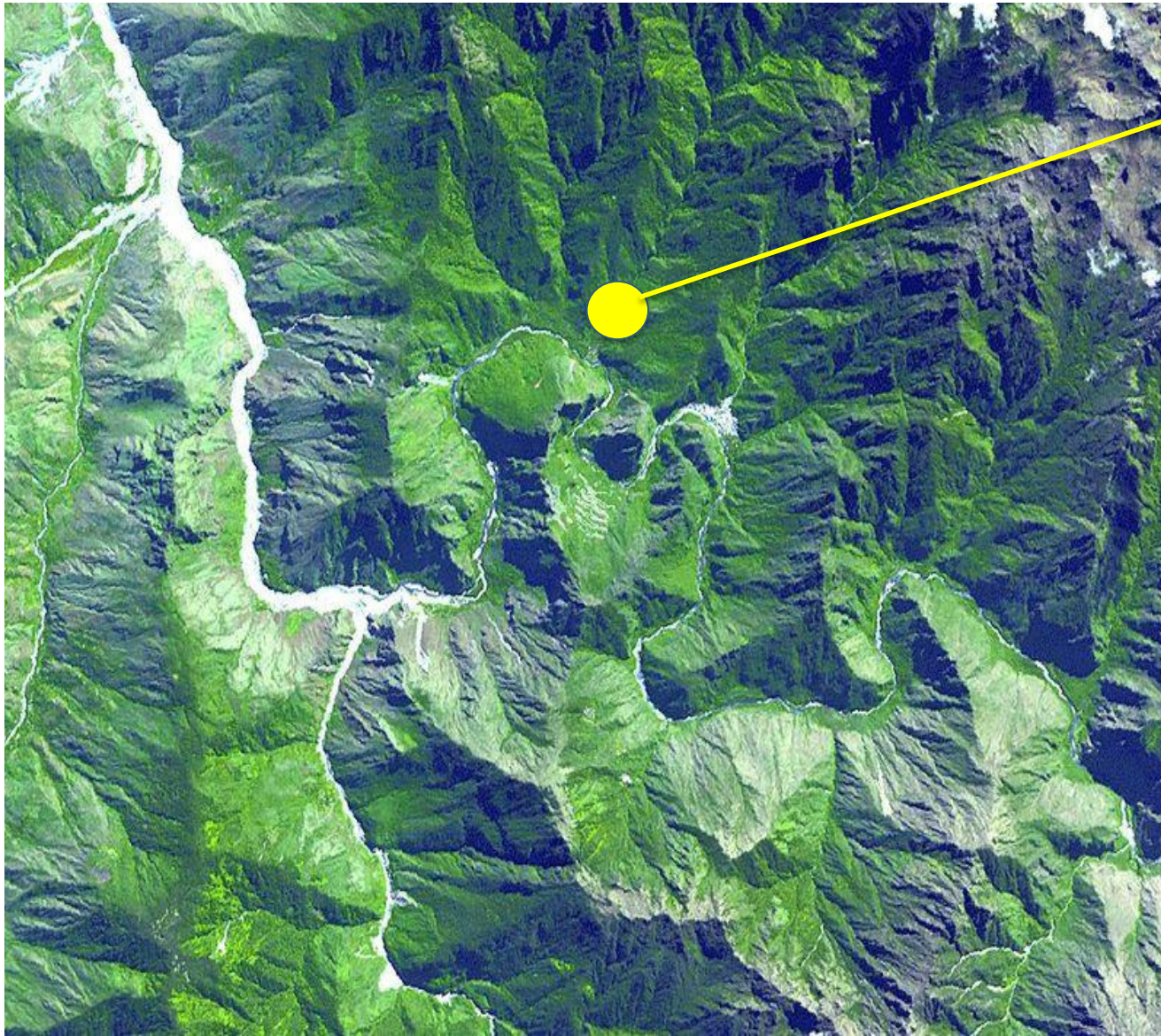
River of
Scholarships

Valley of
Resources

Mountain of
Work

Maps and
Compasses





Forest of
Fees

River of
Scholarships

Valley of
Resources

Mountain of
Work

Maps and
Compasses





Forest of Fees

Tuition (most research-based grad programs)

- \$4,707 per year for domestic students
- \$8,270 per year for int'l students, offset by \$3,200 International Tuition Award
- Higher fees for some graduate programs

Student fees

- Approximately \$1,100 per year
- Includes GSS/AMS Extended Health Insurance and UPass





Forest of Fees

Cost of living

- single student, shared accommodation, no car
- rent and utilities, food, phone, entertainment, clothes, etc.
 - **\$1,390 per month**
 - **\$16,680 per year**
- <https://www.grad.ubc.ca/prospective-students/tuition-fees-cost-living/cost-living>

Additional costs for moving, damage deposit, etc.





Forest of Fees

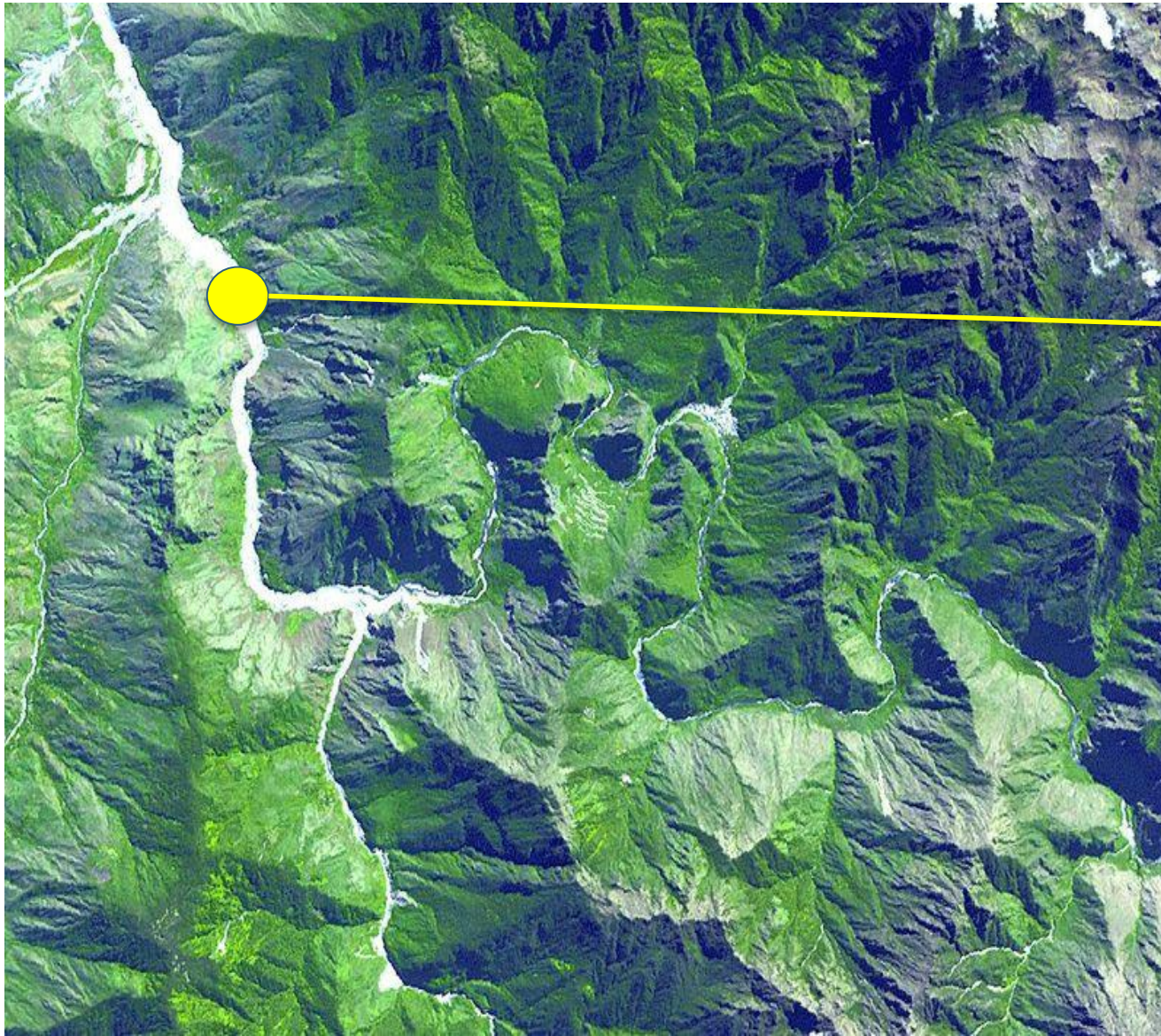
Adding it all up (bare minimum)

Expense	Annual Amount
Tuition	\$4,707
Fees	\$1,100
Cost of living	\$16,680
Total	\$22,487

Future increases

- 2% tuition increase
- 2-3% cost of living increase





Forest of Fees

River of
Scholarships

Valley of
Resources

Mountain of
Work

Maps and
Compasses





River of Scholarships

By student application

- Majority of scholarships

By graduate program recommendation

- Four Year Doctoral Fellowship
- Graduate Support Initiative Awards

By automatic assignment

- International Tuition Award





River of Scholarships

Applying for scholarships

- Where to find information
- Where to submit application
 - To graduate program
 - To Faculty of Graduate and Postdoctoral Studies
 - To funding agency
- When
 - Which deadline applies to you?
 - Start early





River of Scholarships

Eligibility criteria vs. selection criteria

Application components

- Application form
- Canadian Common CV
- Research proposal
- Transcripts
- Reference letters





River of Scholarships

Funding opportunities and resources:

- www.grad.ubc.ca/awards
- <http://students.ubc.ca/enrolment/finances/awards/current> (many are for undergraduate students only, but some are open to graduate students)
- <https://yconic.com/>
- <http://www.scholarshipscanada.com/>

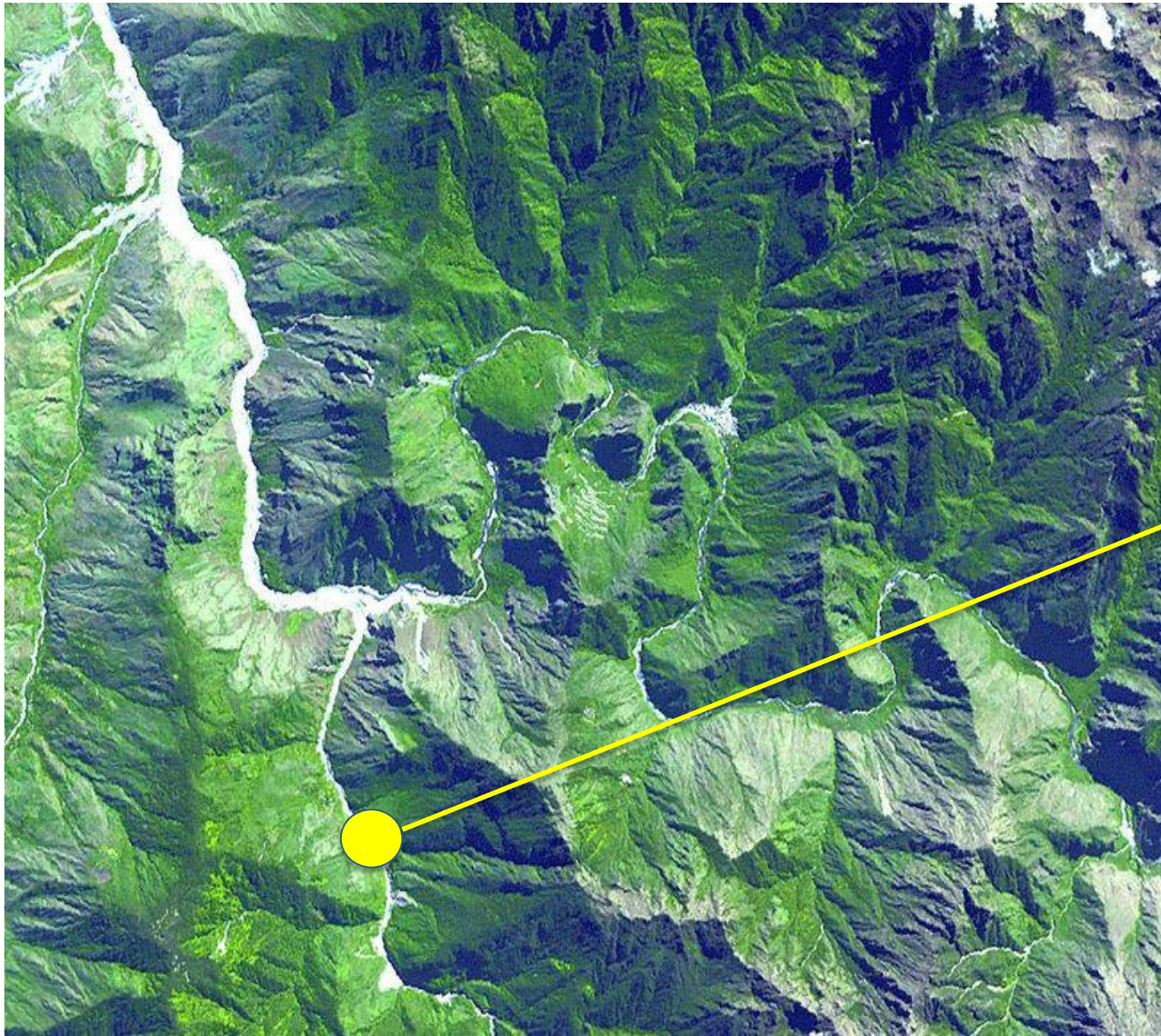




River of Scholarships

- Workshop for students applying to upcoming scholarship competitions
 - Thursday 8 September 2016
 - 14:00 to 16:00
 - Thea Koerner House, 6371 Crescent Road
 - <https://www.grad.ubc.ca/about-us/events/15674-scholarship-award-opportunities-graduate-students>





Forest of
Fees

River of
Scholarships

**Valley of
Resources**

Mountain of
Work

Maps and
Compasses





Valley of Resources

Student loans

- Available to domestic and US students
- Apply through home province or country
- <http://www.students.ubc.ca/finance/student-loans/>
- Maximum per year (BC student loan)
 - \$16,640 for single student
 - \$26,520 for student with dependents





Valley of Resources

UBC General Bursaries

- Non-repayable, based on financial need
- Must be in receipt of Canadian student loan
- Apply on-line via Student Service Centre by June 1st for Summer session and September 15th for Winter session bursaries
- Not all programs are eligible for bursary support
- Recipients notified late November





Valley of Resources

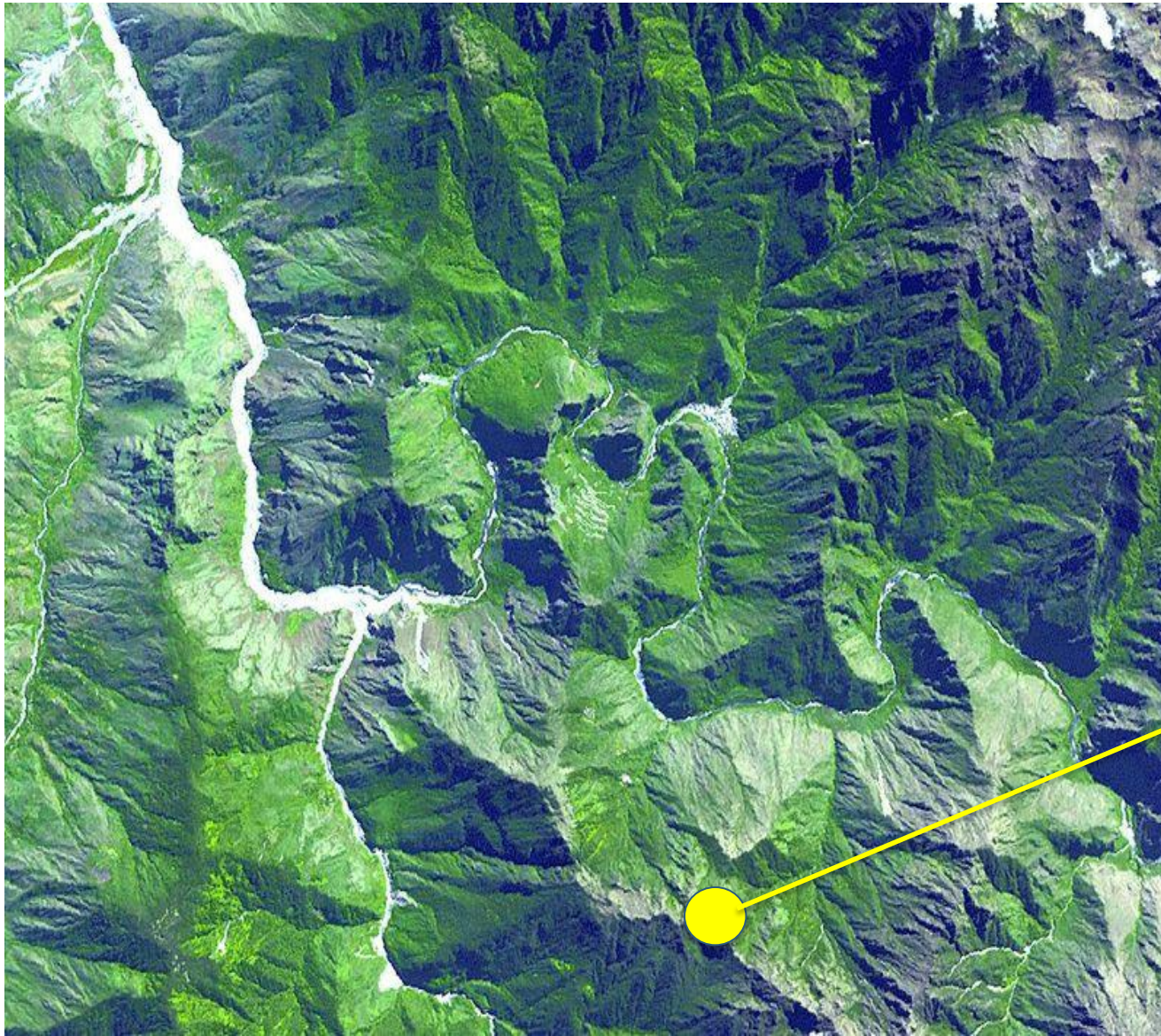
Student lines of credit

- Available through your own bank

Emergency funding

- Schedule a confidential advising appointment with Enrolment Services Professional
- May be able to assist with emergencies





Forest of
Fees

River of
Scholarships

Valley of
Resources

**Mountain of
Work**

Maps and
Compasses





Mountain of Work

Teaching Assistantships

- Contact graduate program
- Collective agreement with CUPE 2278

Research Assistantships

- Supported by supervisor's research grant
- Duties might constitute part of the student's graduate degree requirements
- Contact graduate program / supervisor





Mountain of Work

Work Learn Program

- On-campus work opportunities
- Open to international and domestic students
- Apply online at www.students.ubc.ca/careers

Other employment

- Links to many opportunities at www.students.ubc.ca/careers





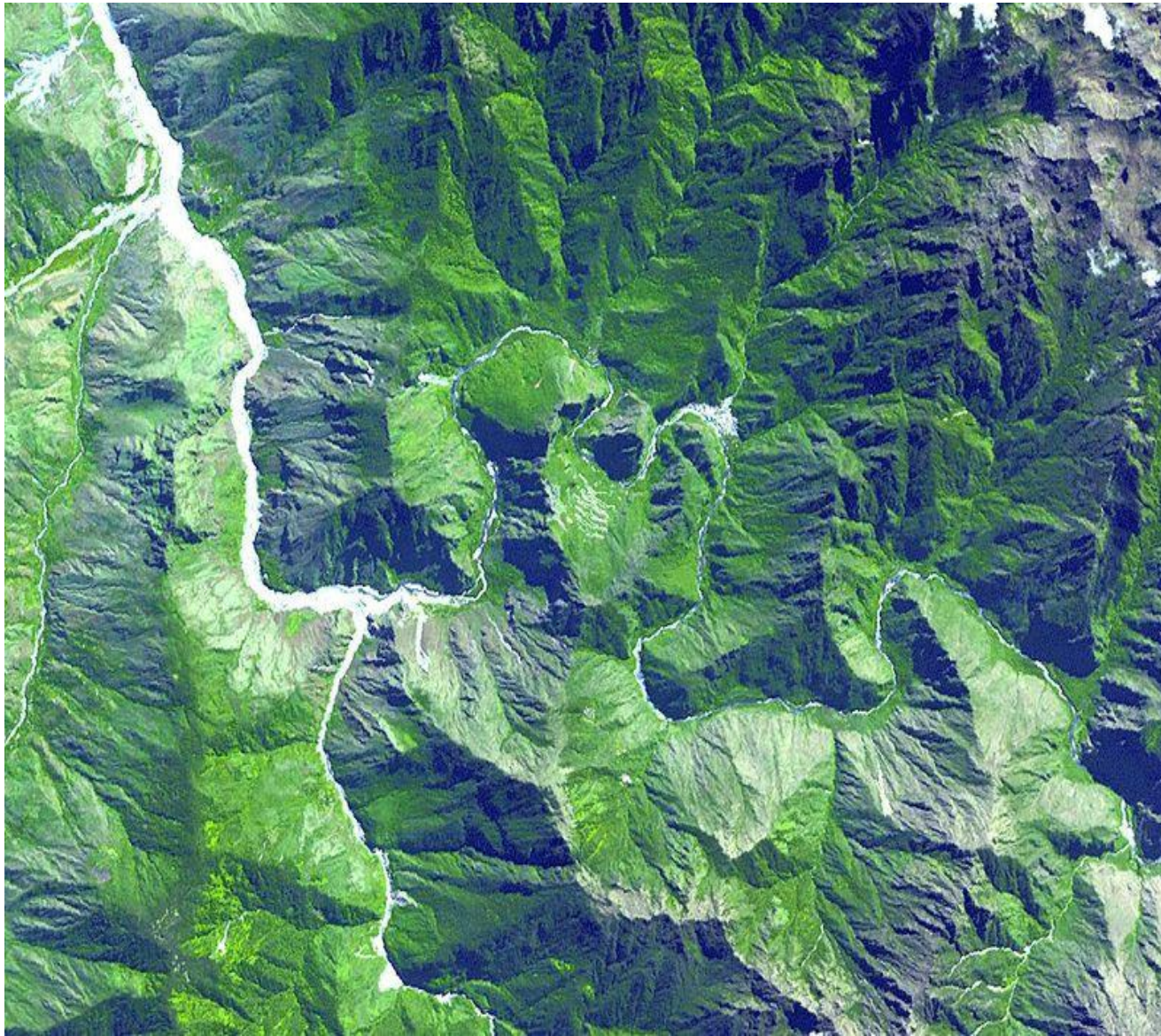
Mountain of Work

Social Insurance Number

- Required in order to work in Canada
- Information for international students at:
<http://students.ubc.ca/enrolment/finances/financial-advice/taxes-international/sin>

Recipients of large (\$17,500 per year or greater) scholarships limited to 12 hours per week of employment





Forest of
Fees

River of
Scholarships

Valley of
Resources

Mountain of
Work

Maps and
Compasses





Maps and Compasses

Student Service Centre

- <https://ssc.adm.ubc.ca>
- Reviewing and paying tuition and fees
- Payment of all scholarships administered by G+PS
 - Award funding first applied to any outstanding fees
 - Remaining funds paid by direct deposit
 - If not enrolled in SSC direct deposit, remaining funds are issued as a cheque





Maps and Compasses

UBC Payroll

- www.my.ubc.ca
- Payment of TA, RA and other employment income
- Paid 15th and end of each month
- Direct deposit to personal bank account





Maps and Compasses

Budgeting and other resources

- <http://www.students.ubc.ca/finance/how-can-we-help-you/financial-toolkit/>
- <http://www.fcac-acfc.gc.ca/Eng/forConsumers/lifeEvents/payingPostSecEd/Pages/StudentB-Grillepo.aspx>





Maps and Compasses

Key offices on campus

Office	Responsibility
Grad and Postdoc Studies graduate.awards@ubc.ca	<ul style="list-style-type: none">Scholarships
Enrolment Services (Brock Hall) es.gradsupport@ubc.ca	<ul style="list-style-type: none">Advising on need-based fundingTuition and feesScholarship cheque pick-up
Graduate program	<ul style="list-style-type: none">TA and RA4YF and GSI Award decisions
Career Services (Brock Hall)	<ul style="list-style-type: none">Work Learn programOther employment opportunities
UBC Financial Services (Payroll)	<ul style="list-style-type: none">Payment of employment income



Map credit: NASA map from <http://www.dailygalaxy.com/.a/6a00d8341bf7f753ef014e8c528b0d970d-pi>
(28 August 2013)



a place of mind

THE UNIVERSITY OF BRITISH COLUMBIA

Graduate and Postdoctoral Studies

www.grad.ubc.ca



a place of mind

THE UNIVERSITY OF BRITISH COLUMBIA

GRADUATE AND
POSTDOCTORAL STUDIES